

Date: July, Tuesday the 25th
Times: 9am - 4pm

I'm Justin, now listen to the story of how I came to be!

Leaders: Jeff Hooeneh moh (617-332-9506) order

Chris Leo-Palermio (617-926-0319)

To bring: Boots, water, lunch, graham, two different types of tree, 3 flavors of jelly bean, three time zones.



Now, I know the title of this trip slip may be a little ambiguous, so I'll let you know. It's DUUA CARB OLN VE E. Wait, maybe it's DC UOA URLV ABNEE. Fine, fine, its Auburn Dale Cove. This place is located upon the Charles river, you may or may not recognize it from when we passed it on canoe-day oh-so long ago, on Friday. This is one of the lengthier non mountain non wells non canoe non 1-trip trips, so make sure to bring buckets of water, and if you do bring buckets full of water you will receive +2 points on the cool student cool-ometer (it does actually exist).

He came upon a program called 'ESP' and was like, 'OMG, this place ROX!! I want to go here or I will go CRAZY'. His parents who give in to his

every desire were like "LGL, OK" and let him come.

In case of Emergency, your child will be brought to: Newton Wellesley Hospital: 617-243-6000. This program must comply with the regulations of the Massachusetts Dept. of Public Health and must be licensed by the City of Newton Health Department.

Trip slip #14 - the last one!

Tuesday, July 25th, 06

Auburndale

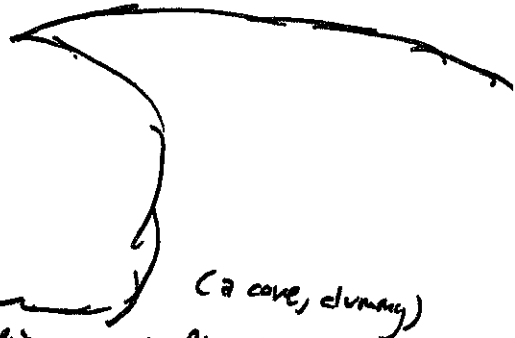
Cove

(lesser know as Ware's Cove)

Leaders: Jeff H. 6173329506
Chris Leo Palermo 6179260319

Meet @ Brown, 9a until 9p

Equipment: Boots, field kit, bunches o' water, raingear, lunch, sunscreen



(a cave, dummy)

(the Charles R. - you should know this one well after the Cave Trip)

You made it to the very last day of the walking trips - HOOORAY! Now, for one last lunah before the mountain sequence (which I know all of you have been waiting for), we will take a trip down to the boonies of Auburndale - "the Cove" as it is called in Newton, as I've heard. Get ready for a whole lot of walking, because that's what we're going to be doing!

So why must we walk to this far away place on what will inevitably be a pretty hot day in July? I'm glad you asked! First of all, this will surely test our endurance for those ominous mountains. But, no that's not all you get for two payments of \$1995! That cove is a wetland next to the bank of the Charles and we've got a problem on our hands, mates. The problem is EUTROPHICATION which causes pond succession due to phosphates washed into the water. So buy this charged-up trip now or you'll be forever wishing you did.

THE FINE PRINT: No money needed and you have to go on trips whether you want to or not

This program must comply with the regulations of the MA Department of Health, and must be licensed by the Newton Health Department

Trip: p #11

-Auburndale- 9-3
-Cove-

July 18, 2000

What to bring: Boots, field kit,
lots of water + food, extra socks
(to avoid blisters from the long hike)
extra \$ for a possible ice-cream
stop.

Your leaders: Danny Tagada 938-0269
Amelia Runien 244-5836

Auburndale cave, better known as
"The Cove," is situated on the Charles
River. Here is a perfect example
of Eutrophication, or accelerated pond
succession. This happens because
chemicals added to the water, which
causes plant growth, leads to the water
to thicken → forest succession.

Auburndale

set it?
where
"love?"
love?

COVE ? ? ?
(AKA Wares Cove) ?
? ? ? ? ? ? ? ?

TU leader: Danny "BoBanni" Yagoda
(617 - 738-0069)

Equipment: Boots, field kit, a crap-load of
9AM-4PM water, big yummy lunch, and
optional \$3 for ice-cream

Auburndale cove is a super-long trip,
but in a good way! Why do we walk so
much? Good question. It's so that on Mt.
Washington you will be ready for anything
and everything.

You may remember Auburndale Cove from
one of our stops on Canoe Prep Day.
Here, along the Charles, there are many invasive
species. An invasive species is one with no
predators. Do you know any examples?
Dredge material - water chestnuts

Auburndale Cove

Equipment:
Boots, field kit,
lots o' water,
rain gear,
big yummy lunch,
lavish gifts to
bestow upon
your leader

(a.k.a. Wares Cove)

Leader: Amelia Runyan (617-244-8836)

Times: 8:30-4:00

meet @ Brown

Okay, so today we have a super long trip. It's a cool place though, so it's o.k. The cove is a park in Auburndale mostly as a picnic area, a playground and a baseball field. But there is a lot more going on there than just some picnics. There are some really nice hiking trails and river plants and wild life. This cove is right next to the place where we went on canoe prep day. We will bring a couple water tests with us so we can compare them with the results we got from the canoe trip. The river here has a lot of invasive species like purple loosestrife, duckweed and water chestnuts. We will talk about what these plants do to the environment and what we try to do about it. See you there!



COVE DEL AUBURNDALE

TP13
7/20



Chris Farley

9-4

For those of you who don't habla español Cove del Auburndale is Spanish for... AUBURNDALE COVE!

Well guys, this is IT. What separates the men

Equipment:

- boots
- lunch
- 2+liters water
- field kit
- rain gear
- 5-10\$ for ice cream
- 2 pair socks
- readiness

(and 3 women) from the boys (and 3 girls). We will be going on the longest walking trip of the program. It will test your resolve, endurance, and ora so get plenty of sleep (no reading Harry Potter til 2am) and be ready for an awesome trip to Auburndale Cove.

Auburndale Cove is a park/wetland next to the bank of the Charles River. There is a problem at the cove though kids. The problem is eutrophication which is the "overfeeding" of a wet land. It is caused by phosphates that are washed into the river and can be likened to POND SUCCESSION (remember!) but supercharged and fast and destructive

Jeff Huememoerder:

(617) 969-0288
Dan Swartz
(617) 244-2339

Find Espy!



FUN FACTS: wetlands help to absorb water when it rains, so you don't fall victim to tsunamis. Wetlands remove small amounts of harmful chemicals from the water and they clean it.

In case of Emergency, your child will be brought to: Newton Wellesley Hospital: 617-243-6000. This program must comply with the regulations of the Massachusetts Dept. of Public Health and must be licensed by the City of Newton Health Department.

Auburndale Cove



What to bring:
Boots, field kit,
mucho agua, raingear,
Food, maybe \$ for
some 'snacks'

Time: 9am-4pm (a.k.a. Wares Cove)

Leaders: Jeff Huenenorder (617-332-9506)
Daniel Swartz (617)-244-2539

Well it turns out that the cove is one of the lengthier trips of our program. In fact, I'll let you in on a little secret, it's in Auburndale, which is in fact my home. There's a pretty nice picnic area. There are also lots of trails to walk and wildlife to see and sweat to sweat. Don't worry about how long the trip is, you've got plenty of leaders about to save you from almost any situation (it does not include class 5 tornado, class 4 or lower is fine. It's that's how tornadoes are ranked.. maybe I should go water Twister again. In fact I will). But anyway, make sure bring even more water than normal, since this is our first trip before the mountain sequenced;

In case of Emergency, your child will be brought to:
Newton Wellesley Hospital: 617-243-6000.

This program must comply with the regulations of the Massachusetts Dept. of Public Health and must be licensed by the City of Newton Health Department.

Auburndale

Get it?
"where"
"love?"

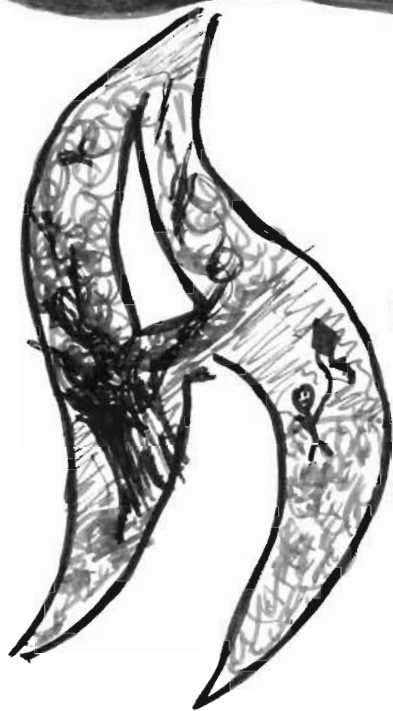
COVE ? ? ?
(AKA Wares Cove) ?
? ? ? ? ? ? ? ?

TU leader: Danny "BoBanni" Yagoda
(617 - 738-0069)

Equipment: Boots, field kit, a crap-load of
9AM - 4 PM Water, big yummy lunch, and
optional PB for ice-cream

Auburndale cove is a super-long trip,
but in a good way! Why do we walk so
much? Good question. It's so that on Mt.
Washington you will be ready for anything
and everything.

You may remember Auburndale Cove from
one of our stops on Canoe Prep Day.
Here, along the Charles, there are many invasive
species. An invasive species is one with no
predators. Do you know any examples?
Hint: Purple loosestrife + deformed water chestnuts



Auburndale



COVE



Date: 7/21/04

Times: 9AM - 4pm

Meet @: Brown

Leaders: Lyuda Kovalchuk => 617 + 584 + 2624

Joey Backer => 617 @ 969 @ 0288

Equipment: boots, tons of water, big lunch, field kit

On this extra-long trip, we will visit Auburndale Cove, a cool place that consists mainly of picnic areas and awesome hiking trails. But not only does it have picnic areas and awesome hiking trails, it also contains some great wildlife, which we'll take a look at. Where could such a wonderful place be? It is right near the place where we had canoe Prep Day. And where is that? In Auburndale, of course! which is not a short distance from Brown, so come prepared to walk!

This program must comply with the regulations of the Dept. of Public Health and be reviewed by the City of Newton Health Dept. In case of emergency, you can be brought to a hospital (617) 843-6000

Auburndale

Park

Leader: Jaid 964-5857

July 19, 1989

Trip slip # 11

9am - 3pm

Dist. Auburndale
Park

Equipment: Field kit, Boots, 2 Water
2 pair socks, Big lunch, bag stuff, Moleskin

This is another mountain preparatory trip. Yes it's another long hike and that's why you want two pairs of socks. It's a long trip to get you in shape for the mountains. You will be using your map + compass in a big way because Leea and I won't lead you anywhere.

Auburndale park is exactly what it says, a park, and not a conservation, thus we will be able to see how man and the environment co exist.

Make sure you bring extra socks and moleskin because your feet are everything and prepare to hike! Sleep well.

Auburndale Park

Date: July 11th

leader: Beth Ann D'Agostino

trip slip: number seven

number: 332-2827

Equipment: field kit, bug repellent,

2 water bottles and 2 pairs of socks.



time: 9:00  3:00


Also bring moleskin



This is a long hiking trip. This is basically done to get all of us, including me in shape for the mountains. We will see the river and park and if we had time we will go to Norumbega and its towers. The towers is where the vikings made a colony to live in for a while. As you know vikings were nomades and the tower is the remainder of their colony there.

nomades: people who travel in large groups together. they do not settle in one spot for too long at one time.

Bring a Big Lunch !!! you will

be very hungry. Remember we will be getting back later than 2:00, so don't forget to tell your parents. Let's have some fun!! 

AUBURNDALE COVE

Equipment: LOTS OF WATER
Boats
BIG LUNCH
Field kit

Trislip #

Sarah 765-4602

July 18, 1995

9:00am - 3:00pm

Dan T. - 527-2763



Today is going for Mt. Washington.
 though, it is all in preparation for Mt. Washington.
 Eutrophication have you heard that yet? Well
 Eutrophication is basically when
 excess of nutrients very quickly. It happens
 of fertilizing chemicals. The cause of this
 algae die. By now you probably know the
 in the lake. The result of this
 you know about the leaves and the
 a sinus which is in between
 points of a leaf are called
 the little lines inside the
 a tree that is why it is
 cooler under a tree
 than in the sun. It is
 called transpiration!



Auburndale Cove



Date:
July 21, 1997

Place: Newton South

Equipment
Boats, ~~Knives~~ Day Packs,
field kit, Lunch, and more
water. ~~for ice cream~~

Leaders:
Peter - 11 969-449
Jenny - 969-27

Today is probably our longest trip that we do on foot. We will be walking from Newton South to Auburndale Cove. The cove is on the Charles River, where there is a problem with keeping the weeds under control. In 1993 the cove was sprayed with a "safe for the environment" weed killer. This process is called eutrophication is when fertilizers get into the water and cause plants to overgrow. People think that's just a problem, but they act as if it's not. We do not have to spray the cove.

if suckers

Hubbardsdale Cove

July 18, 1995
Times: 9-3

Leaders: Sarah Northrup - 965-4602
Dan Thomases - 527-2763
~~Logan Thomases - 965-0793~~

Equipment: field kit, boots, 2 water bottles, BIG
lunch, 2 pairs of socks (wear them), sunscreen



This is a really long trip. This is to prepare
us for the mountains. We'll hang out around
the park, and see what's new with the river.
We'll do some water tests to see how the
river is doing.

Why is the Charles River brown? ~~Why~~
~~Why is it brown?~~ (Remind me to tell you)

Do you know what eutrophication is?
Remember pond succession? Eutrophication is pond
succession really, really fast. It is caused
by phosphates that are washed into the
water.

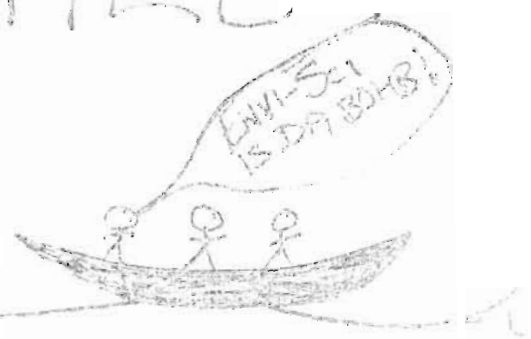
LEADERS:

JENNY (969-2776)
&
PETE (969-4196)

TRIPSUPPLY
JULY 21, 1987
9AM - 3PM

OPTIONAL:
\$ FOR ♀

AUBURNDALE COVE



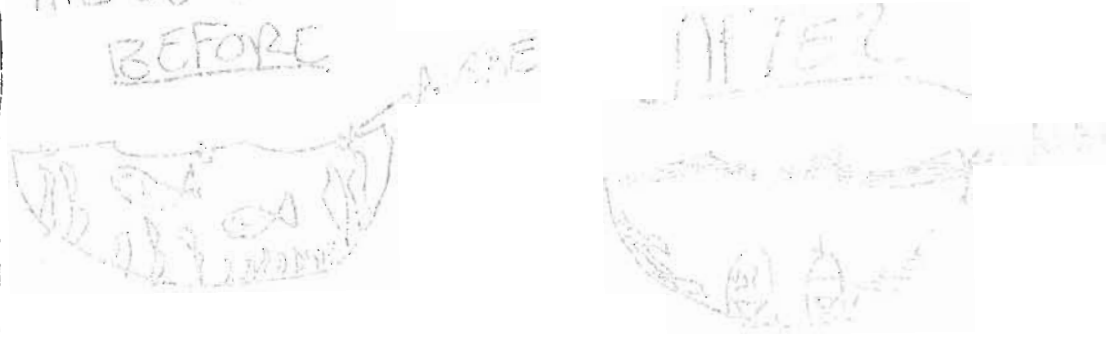
EQUIPMENT:
BOOTS, BIG LUNCH,
LOTS OF WATER,
FIELD KIT, WEAR
2 PAIRS OF SOCKS

TODAY WILL BE OUR LAST WATER
NEWTON TRIP! ☺

WHAT ARE THE
QUALIFICATIONS
TO BE A TREE?

- HAS TO BE OVER 3 FT TALL
- HAS A WOODY STEM
- HAS A BRANCH THAT'S AT LEAST 3 IN. IN DIAMETER

THE COVE IS A GREAT PLACE TO DISCUSS POND SUCCESSION AND EUTROPHICATION. WHAT IS EUTROPHICATION, YOU ASK? EUTROPHICATION IS POND SUCCESSION AT AN ACCELERATED RATE. ANOTHER PROBLEM THAT THE CITY, AND OTHER PARTS OF THE CHARLES, HAS AND IS BLOOMING. BLOOMS ARE THE THICK LAYERS OF ALGAE THAT COVER THE SURFACE OF THE RIVER AND BLOCK THE SUNLIGHT.



Gordon Roble #13
244-9304

Times 9 AM - 3 PM

7/20/93
Equipment:

2 pairs of socks, a
large lunch, field kit,
a bit of money and
2 pairs of socks

AUBURNDALE (Ware's) COVE



This is the trip that goes to the cove. cove, cove, cove. De Dura! This trip was introduced last year as Pam's own design in order to further explore the effects of Eutrophication. "Bless you." No actually it is a very important effect on pond successions. It causes the accelerated rate of pond succession due to outside forces like a beaver dam or some chemical like a phosphate, some thing that comes from fertilizer. Something like phosphate causes everything in the pond to grow faster and therefore the pond goes through pond succession much faster. But at the Cove and Bullough's Pond which was also going through Eutrophication they, being the powers of the city, decided to clean and try to slow down this process in the Cove. Now in the Cove the growth has been stopped. ^{instead of Gordon Roble} Other than this fantastic process, the cove also holds such treasures as a small forest, we can explore which stage it is in and it also has a freak of nature, an exercise course like the one through Cold Springs Park.



Did you know?

In 1987, America generated enough trash to fill a four-lane highway one foot deep from Boston to L.A.

Anywhere
S. (Lustre)
wind beneath
trick

Did you guess from all my little
cave's, that Auburndale Cove is an extra
of the Charles river?

The Cove.